

MERCURY WINRUNNER

Mercury WinRunner® is the standard functional testing solution for enterprise IT applications. It captures, verifies, and replays user interactions automatically, so you can identify defects and ensure that business processes work as designed.

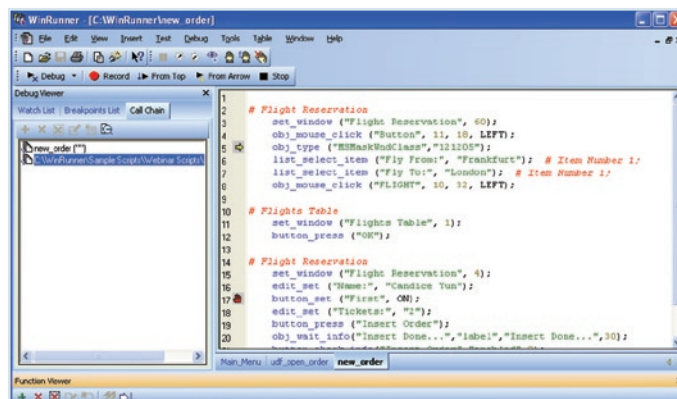
Organizations of all sizes face a common dilemma – how to efficiently test multiple applications that are constantly evolving and required to work in diverse environments. In addition, companies are struggling with limited resources and increased pressure to deliver high-quality products on schedule. How can you ensure that mission-critical applications work as expected and meet business requirements?

The answer is functional and regression testing prior to deployment. Mercury WinRunner offers your organization a powerful tool for enterprise-wide functional and regression testing. Mercury WinRunner captures, verifies, and replays user interactions automatically to identify defects and ensure that business processes work flawlessly upon deployment and remain reliable. With WinRunner, your organization gains several advantages, including:

- Reduced testing time by automating repetitive tasks.
- Optimized testing efforts by covering diverse environments with a single testing tool.
- Maximized return on investment through modifying and reusing test scripts as the application evolves.

HOW IT WORKS

Mercury WinRunner's intuitive recording process allows users to produce robust functional tests. To create a test, WinRunner simply records a typical business process by emulating user actions, such as ordering an item or opening a vendor account. During recording,



Mercury WinRunner's workspace enables you to easily manage and monitor breakpoints, watch points, and call chains.

you can directly edit generated scripts to meet the most complex test requirements.

Next, testers can add checkpoints, which compare expected and actual outcomes from the test run. Mercury WinRunner offers a variety of checkpoints, including test, GUI, bitmap, and web links. WinRunner can also verify database values to ensure transaction accuracy and database integrity, highlighting records that have been updated, modified, deleted, and inserted.

With a few mouse clicks, Mercury WinRunner's DataDriver Wizard lets you convert a recorded business process into a data-driven test that reflects the unique, real-life actions of multiple users. For further test

enhancement, the Function Generator presents a quick and reliable way to program tests, while the Virtual Object Wizard enables you to teach WinRunner to recognize, record, and replay any unknown or custom object.

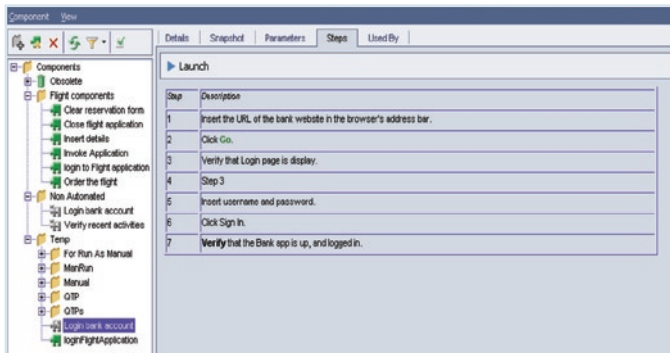
As Mercury WinRunner executes tests, it operates the application automatically, as though a real user were performing each step in the business process. If test execution takes place after hours or in the absence of a QA engineer, WinRunner's Recovery Manager and Exception Handling mechanism automatically troubleshoot unexpected events, errors, and application crashes to ensure smooth test completion.

Once tests are run, Mercury WinRunner's interactive reporting tools help your team interpret results by providing detailed, easy-to-read reports that list errors and their origination. WinRunner enables your organization to build reusable tests to use throughout an application's lifecycle. Thus, if developers modify an application over time, testers do not need to modify multiple tests. Instead, they can apply changes to the GUI Map, a central repository of test-related information, and WinRunner will automatically propagate changes to all relevant scripts.

MERCURY FUNCTIONAL TESTING

Customers with a large investment in Mercury WinRunner test assets who want to move to Mercury QuickTest Professional™ can use Mercury Functional Testing™ to facilitate the transition.

Mercury Functional Testing combines Mercury QuickTest Professional and Mercury WinRunner into a single integrated product that can leverage test assets from both WinRunner and QuickTest Professional scripts. Quality engineers can use Mercury Functional Testing to create "composite scripts" consisting of tests built in both WinRunner and QuickTest Professional. Mercury Functional Testing leverages the integration between WinRunner and QuickTest Professional, where each product can call scripts of the other, and test results are reported into a common reporting interface.



Mercury WinRunner emulates and captures user actions into test scripts that can be used throughout the application's lifecycle, using the above process.

PART OF MERCURY QUALITY CENTER

Mercury WinRunner is part of Mercury Quality Center™, an integrated set of software, services, and best practices for automating key quality activities, including requirements management, test management, defect management, functional testing, and business-process testing.

SUPPORTED ENVIRONMENTS

Mercury WinRunner supports many environments, including the following. For more information on WinRunner and a complete list of supported environments, please visit www.mercury.com/products/winrunner.

Client-Server

- Windows applications (Win32)
- Visual Basic
- Java
- ActiveX

Web Technologies

- HTML
- DHTML
- JavaScript

Browsers

- Internet Explorer
- Netscape
- AOL

Enterprise Applications

- Oracle
- PeopleSoft
- Siebel
- Baan

Operating Systems

- Windows XP
- Windows 2000
- Windows 98
- Windows NT
- Windows ME

Programming Environments

- PowerBuilder
- Oracle Developer
- Delphi
- Centura
- VisualAge Smalltalk
- Forte
- Janus Grids

Terminal Emulators

- 3270
- 5250
- VT100

Server Technologies

- Oracle
- Microsoft
- IBM
- ODBC

Languages

- European
- Japanese
- Chinese (traditional and simplified)
- Korean

FEATURES AND BENEFITS

- Simplifies the process of preparing functional testing scripts. This allows for optimal use of QA resources and results in more thorough testing.
- Examines and compares expected and actual results using multiple verifications for text, application objects, bitmaps, URLs, and databases. This ensures stable functionality and execution of business transactions when the application is released into production.
- Enables unattended recovery with Recovery Manager, by guiding users through the process of defining recovery scenarios.
- Fully integrates with Mercury QuickTest Professional™, Mercury LoadRunner®, and Mercury TestDirector®.

MERCURY

Mercury is the global leader in business technology optimization (BTO). We are committed to helping customers optimize the business outcome of IT.
WWW.MERCURY.COM